

DQpowersuite 5.22 Release Notes

Decision Support Inc.

Date: December 2004

This release letter accompanies the software for DQpowersuite Version 5.22. Enhancements and changes to DQbroker, DQadmin, and DQview are described. See the readme file on the distribution CD for more information about installing the components of the DQpowersuite.

DQbroker enhancements

Native support for MySQL databases

Native support for MySQL databases is now available. A new proprietary MySQL client library allows DQbroker to access MySQL databases like other databases. Native access works in conjunction with MySQL server releases 4.1 and higher.

Native support for Sybase

Native support for Sybase is now available. On UNIX systems (Sun/Solaris, HP-UX, IBM/AIX), DQbroker can access Sybase using a worker bound to dynamic Sybase libraries. This means that the worker will use your site's version of the Sybase libraries. This helps minimize inconsistency issues between the different releases of Sybase.

Support for CONCATSPACE SQL function

The CONCATSPACE function combines two strings into a single string with a space between them. For example, CONCATSPACE('Joe', 'Smith') returns the string 'Joe Smith'.

Support for EXPANDDATE SQL function

The EXPANDDATE function allows the parser to expand an argument as a date literal before sending it to the database, thus improving optimization. For example, the following query selects records for the last 10 days (using a current date of December 24, 2004). The first SELECT statement shows the original query. The second shows the updated query and the third shows how the query is effectively processed:

```
select * from orders where PurchaseDate > timestampadd(day, -10, curdate())
```

```
select * from orders where PurchaseDate > expanddate(timestampadd(day, -10, curdate()))
```

```
select * from orders where PurchaseDate > {ts '2004-12-24 00:00:00'}
```

DQadmin enhancements

Adding table name as a prefix to column names

When building or editing a view in the Query Builder, you can now specify that all columns be aliased in the form “tablename_columnname.” To use this feature, you can set a new option called **Alias ALL columns using table name** (Options menu). This feature is particularly useful if you are working with joined tables and the tables contain the same column names.

Before you attempt to set the alias for column names, you must first set an alias for the table name. The table name alias is used for the “tablename” portion of the column alias. For example, if your table is named EMPLOYEES, you may want to specify a table name alias of EMPLOYEES1. After you specify the columns you want to include in your query, choose **Alias ALL columns using table name** (Options menu). Columns that were named LASTNAME, SSN, ADDRESS, for example, will now be named EMPLOYEES1_LASTNAME, EMPLOYEES1_SSN, and EMPLOYEES1_ADDRESS. If you later change the table name alias again (to EMPLOYEES2, for example), the column aliases you already specified will not change. You can, however, change the column aliases manually if necessary.

Log files for jobs are now displayed

The job log file is an ASCII text file that lists all the statements processed when a job runs. It displays their result in terms of success or error. A folder for log files is now present under each job. The folder shows all the existing job log files for the job.

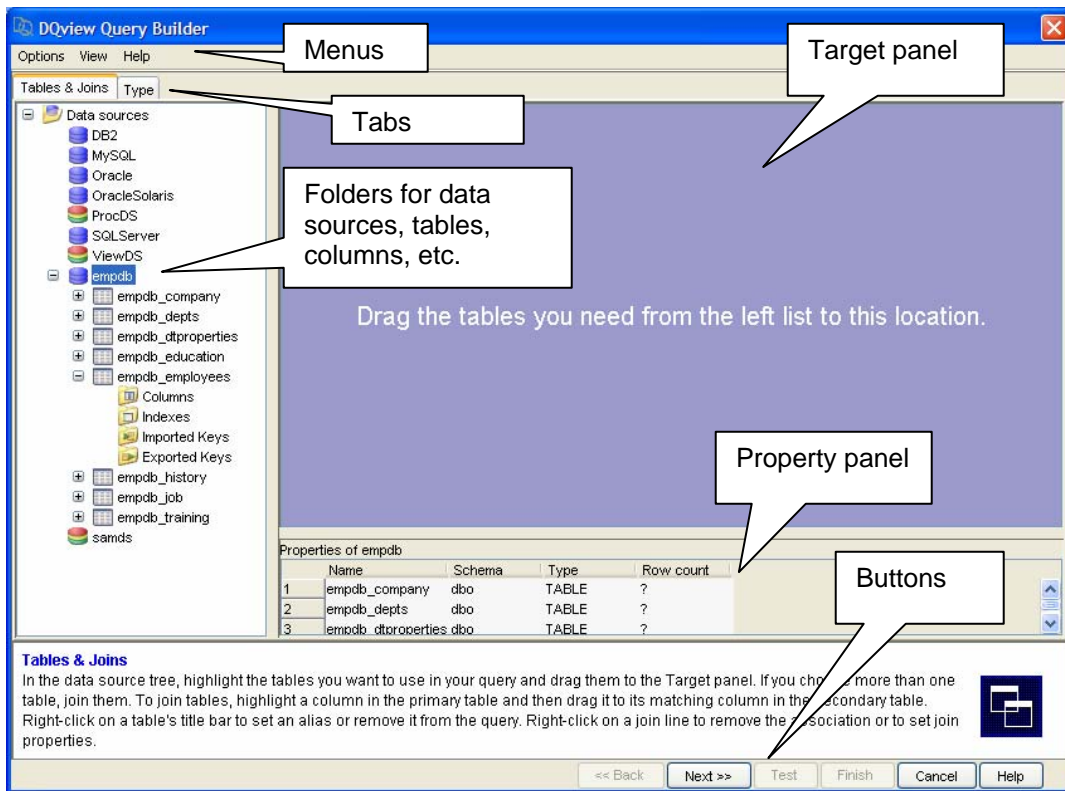
Jobs for servers are now displayed

A folder called **Jobs** is now present under each server. The folder contains a list of the jobs scheduled to run on that server.

DQview enhancements

New interface

DQview is a Microsoft Excel add-in that allows you to create and embed enterprise queries in Excel worksheets. DQview is integrated with the Query Builder tool. The Query Builder allows you to create queries using a graphical user interface (GUI). In the latest version of the software, the interface to the Query Builder was completely redesigned. The new interface is more intuitive and easier to navigate. The following figure shows the main Query Builder window:



The following updated documentation is available for DQview:

- *DQview Installation Guide*
- *DQview User's Guide*
- DQview online help
- Query Builder online help