

DQpowersuite 5.26.2 Release Notes

Decision Support Inc.

Date: November 2006

This release letter accompanies the software for *DQpowersuite* Version 5.26.2. In *DQvista* 5.41 (which is included as part of the *DQpowersuite*), you can now report directly from stored procedures — result sets returned by stored procedure calls. The following sections provide information on how to set up and/or use this new feature. Enhancements and changes to *DQvista* as well as *DQadmin* are described. See the readme file on the distribution CD for more information about installing the components of the *DQpowersuite*.

Reporting from stored procedures in DQvista

In *DQvista*, you can now report directly from stored procedures. Stored procedures are operations written in SQL and stored on the database server. They return result sets based on stored procedure calls. You can report against stored procedures in *DQvista* in much the same way you report against tables. The main difference is that you may have to supply one or more input values to the procedures before running a report. In order to report against the result set in *DQvista*, you *must* write the procedure so that it meets the following criteria:

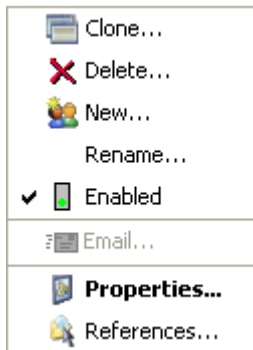
1. The procedure must return only one result set. If it returns more, they are ignored.
2. The procedure cannot return any informational results, status messages, row counts, etc. *prior* to the actual result set. If these items are returned after the result set, they are ignored.
3. The procedure should not have any side effects such as updating or deleting data. If a procedure has side effects, those side effects will occur each time the procedure is executed. In addition to executing the procedure when running a report, *DQvista* also executes the procedure to get the description of the result set needed to build the report layout.
4. The same result set description must be returned by the procedure regardless of what values are supplied to the input parameters.
5. The procedure cannot have output-only parameters. If it has input-output parameters, the output value is ignored.

Setting up the ability to report from stored procedures

In *DQadmin*, the administrator can determine which DQvista users have the ability to report against stored procedures.

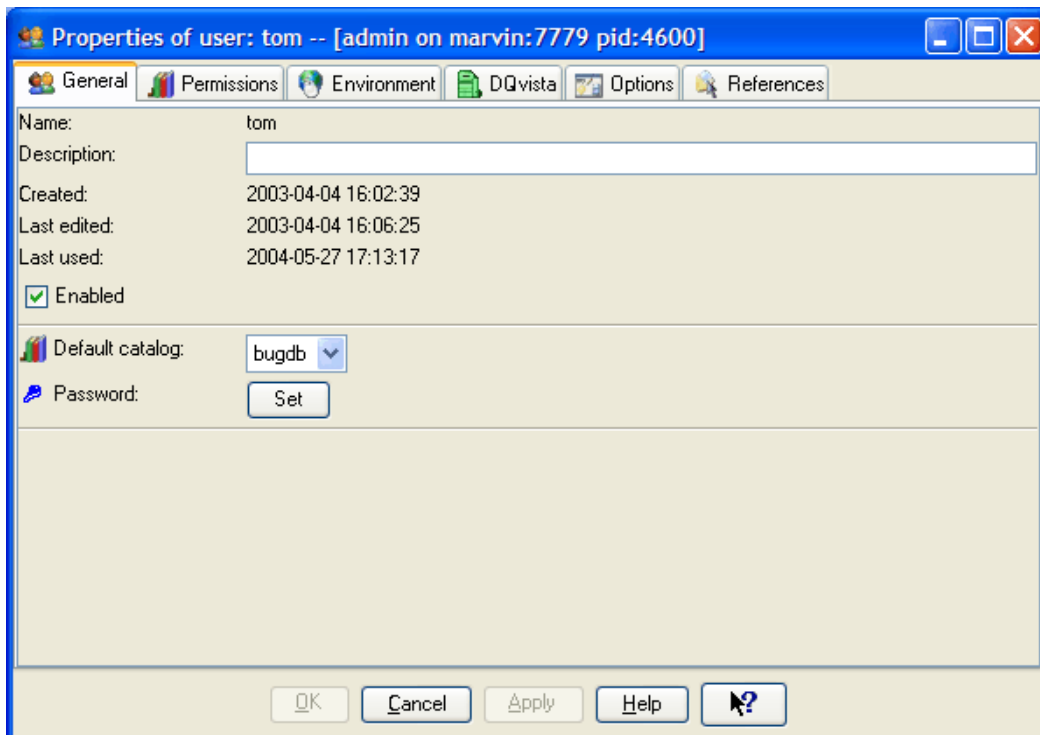
To set this option for a user, right-click a user name in the left or right pane.

The user menu displays:

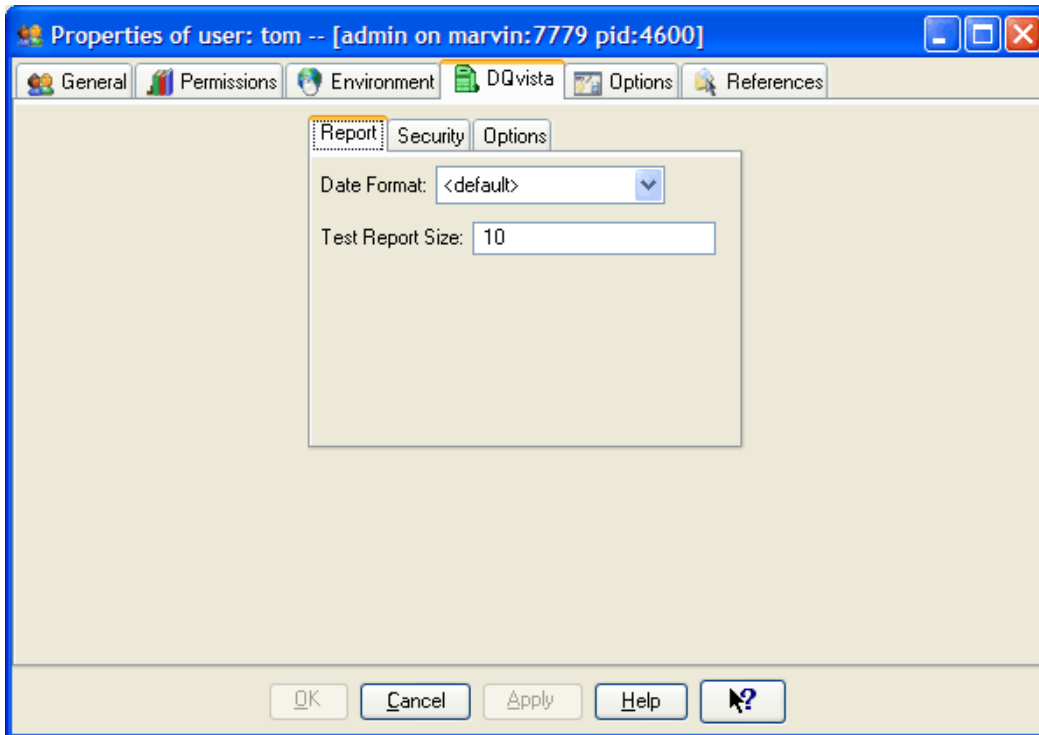


Choose the **Properties** command.

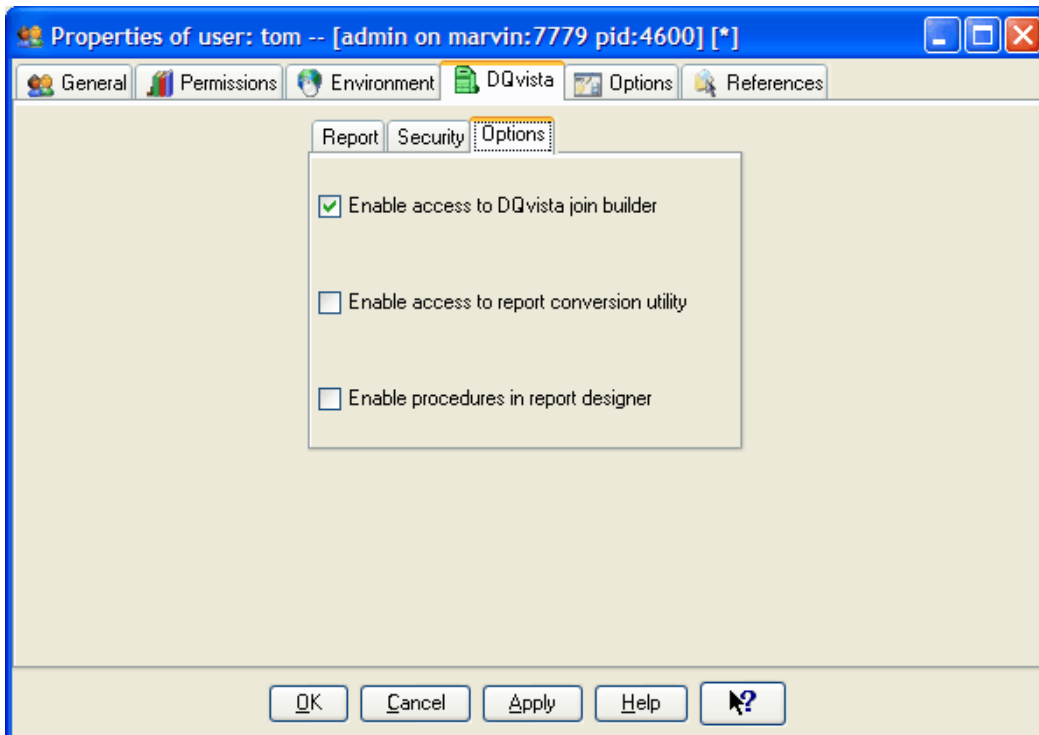
The **Properties** dialog box displays:



Select the **DQvista** panel:



Select the DQvista **Options** panel:



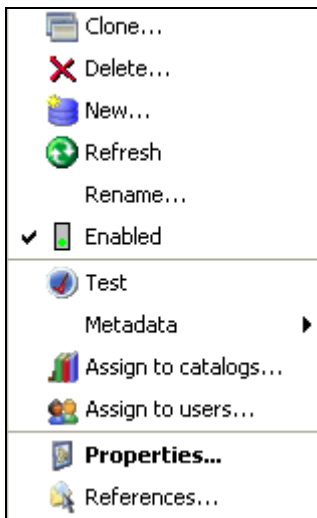
Select the option **Enable procedures in report designer** and choose **OK**.

You must set this option for each user who needs to report against stored procedures.

Note: The first two options that appear on the DQvista **Options** panel appeared on the DQvista **Security** panel in earlier versions.

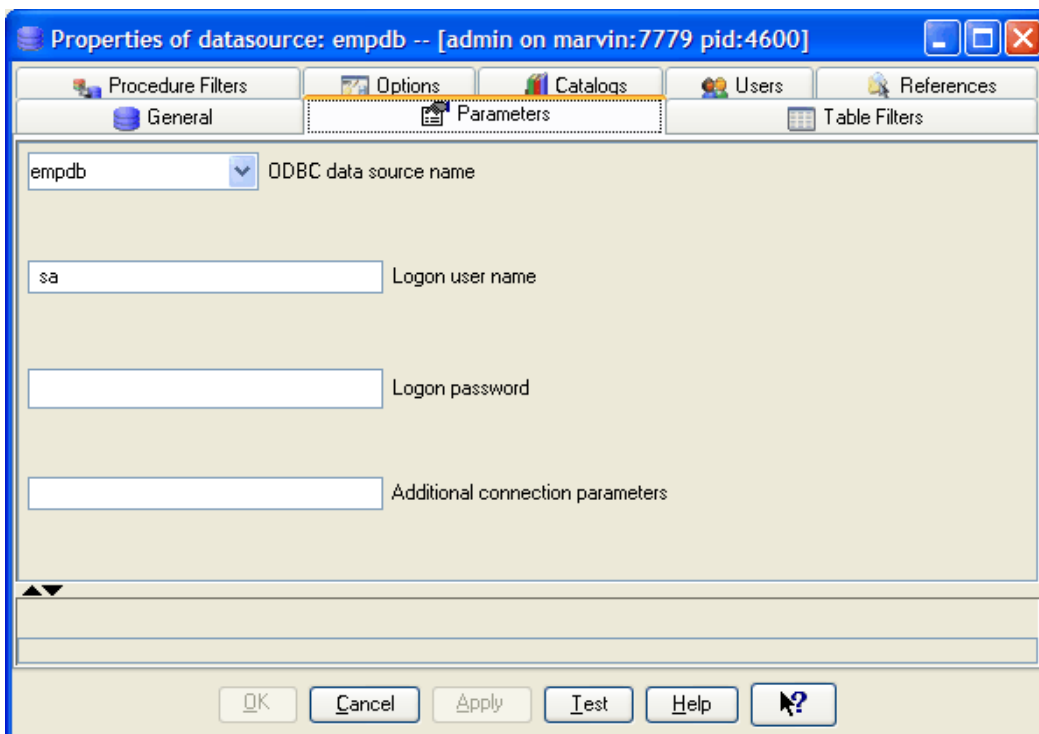
Hiding system stored procedures

For some data sources such as SQL Server, there are multiple system stored procedures. The display of all stored procedures in DQvista can get long and unwieldy. To hide stored procedures, right-click on the data source for which you want to hide procedures. The data source menu displays:

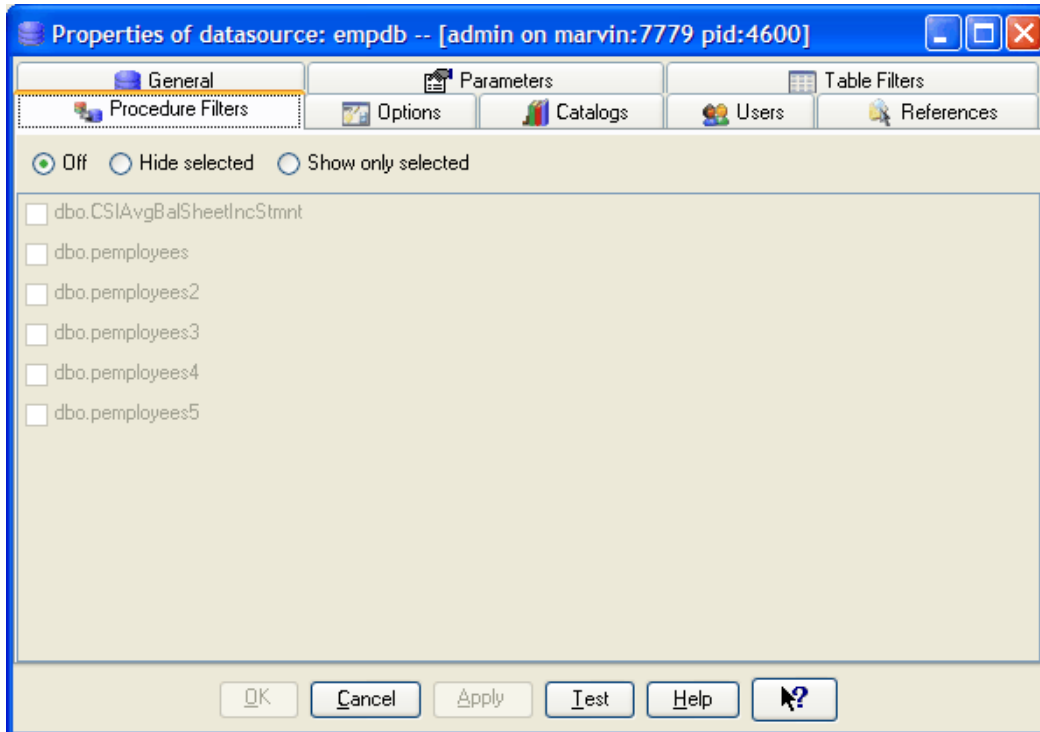


Choose the **Properties** command.

The **Properties** dialog box displays:



Select the **Procedure Filters** panel:



Choose the option **Hide selected** and then check the procedures you want to hide.

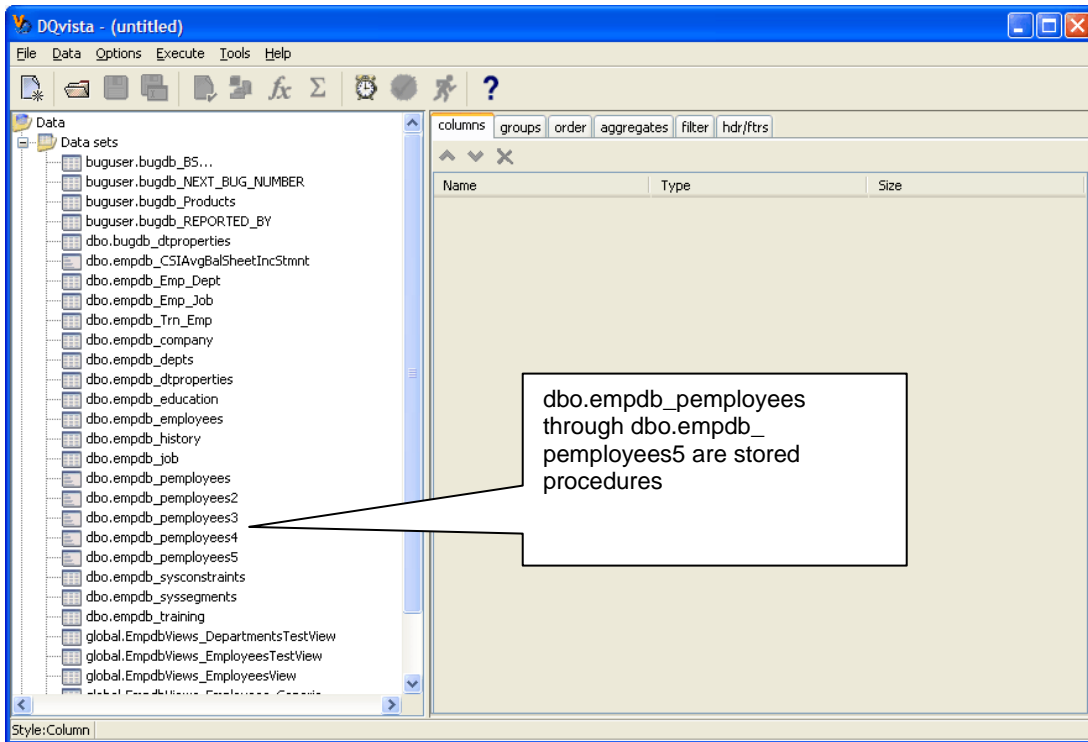
or

Choose the option **Show only selected** and then check the procedures you want to show.

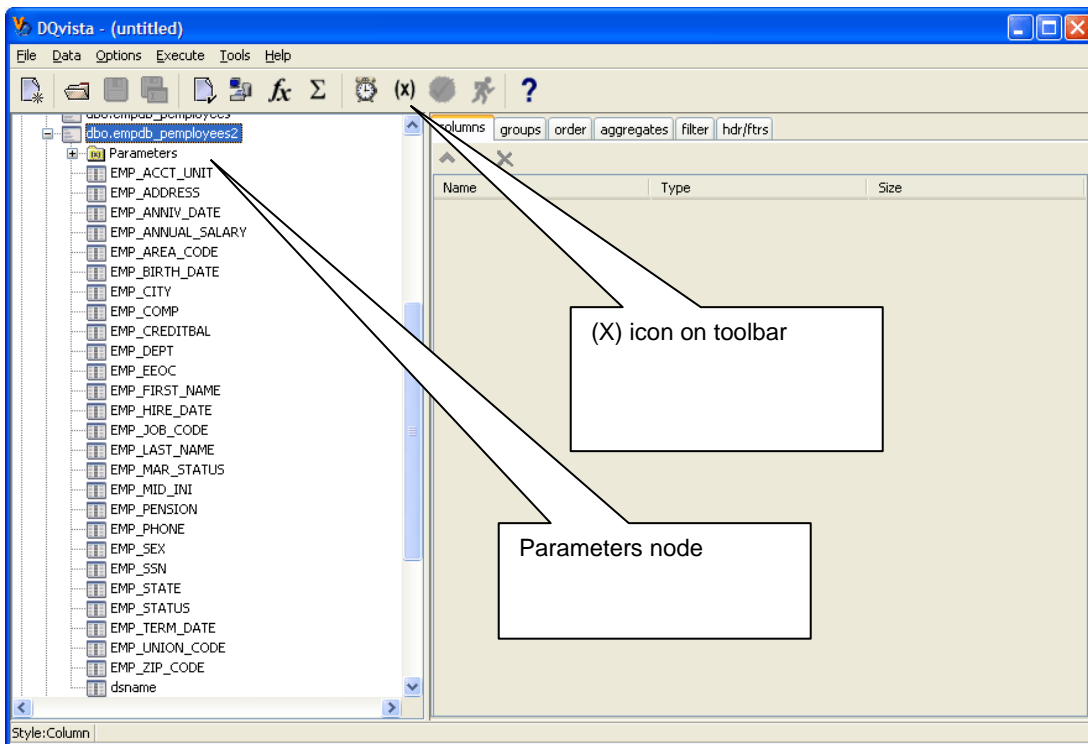
Choose **OK**.

Reporting from stored procedures

If reporting from stored procedures has been enabled for you in *DQadmin*, you will see procedures as well as tables listed in the **Data** folder in your data tree in *DQvista*. Procedures appear with a different icon beside them than tables do:

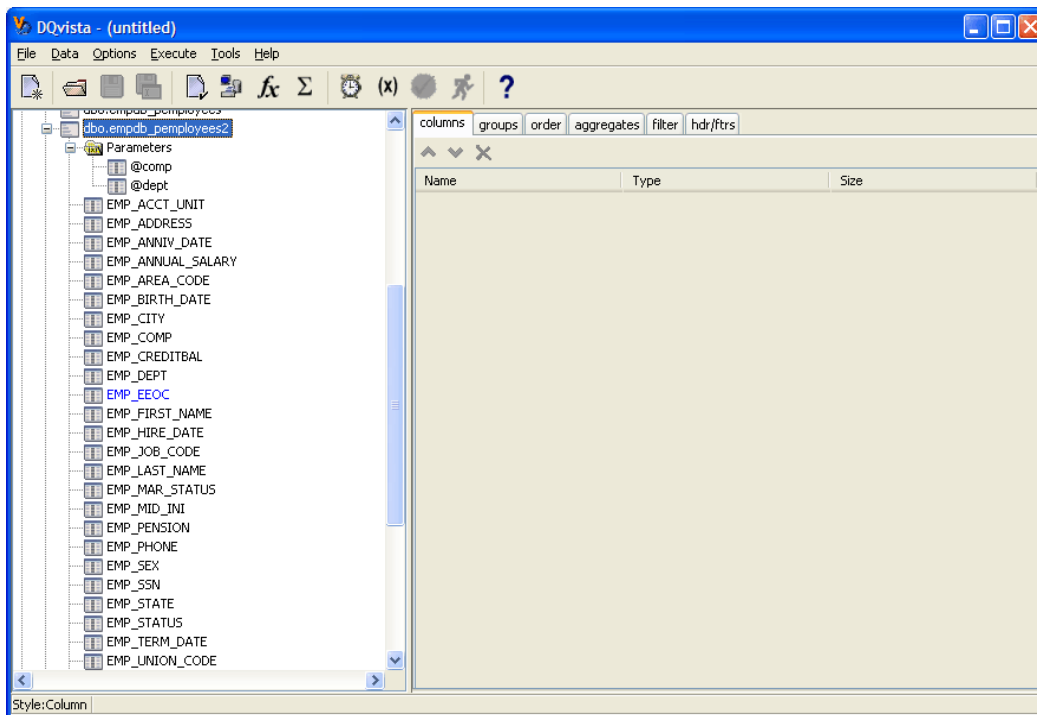


If you open a stored procedure in the data tree, the user interface appears as follows:



A **Parameters** node appears in the data tree and an **(X)** icon (see p. 9) appears on the toolbar.

Expand the **Parameters** node to list the input parameters required by the stored procedure:



Stored procedure parameter names always start with the @ symbol.

To run a report against a stored procedure, specify the contents of your report (for example, choose columns, etc.) and then run your report as usual by choosing the **Run** icon or **Full Report** command (File menu).

A **Runtime Input** screen appears so that you can supply values for the input parameters:

http://marvin:9541/ReportServlet/714064206130548/Report1.html - Microsoft Internet Explorer

File Edit View Favorites Tools Help

Snagit

DQvista Runtime Input

dbo.empdb_pemployees2.@comp =

dbo.empdb_pemployees2.@dept =

Submit Reset

Enter values and choose **Submit**.

DQvista returns a report based on the values you entered. For example, if you entered 1 for company and 12 for department, DQvista generates a report such as the following:

DQvista Report - Microsoft Internet Explorer

File Edit View Favorites Tools Help

Snagit

EMP COMP	EMP DEPT	EMP FIRST NAME	EMP LAST NAME	EMP ANNUAL SALARY
1	12	CATHY	MCLAUGHLIN	44200
1	12	DIANA	LENZ	26520
1	12	VALERIE	SMITH	26472.4
1	12	SHIRLEY	GOLD	35115.2
1	12	GLORIA	NEELY	35455.2
1	12	LORI	KLEIN	26531.9

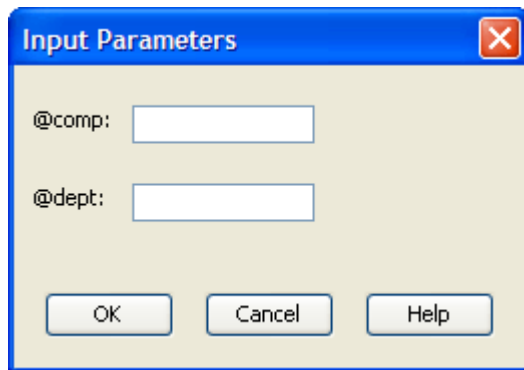
Saving the input values in the spec

Instead of supplying the input values at runtime, you can enter the values in advance so that they are saved with the report description. You can do this by using one of two methods:

- Using the **(X)** icon on the toolbar
- Using the **Properties** command in the right-click menu

Using the (X) icon

When building your report specification, you can choose the **(X)** icon on the toolbar to specify your input parameter values. When you choose **(X)**, the **Input Parameters** dialog box appears:



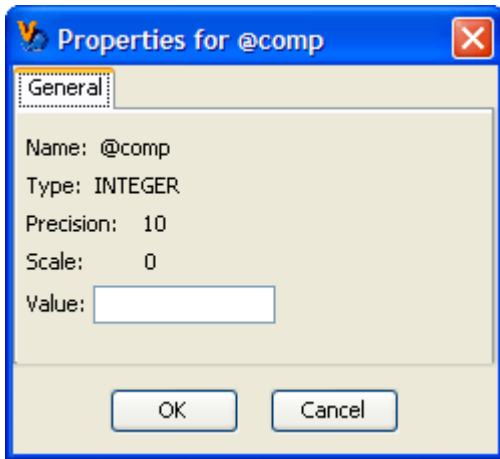
Enter the input values and choose **OK**.

When you run the report, you will not be prompted to supply input values. The values are saved with your report description. However, if you do not supply values for all parameters, you will be prompted to enter values for any remaining parameters at runtime.

Using the Properties command

In lieu of using the **(X)** icon method to supply the input values in advance, you can right-click on a parameter in the data tree and choose the **Properties** command.

A **Properties** dialog box like the following one appears:



Enter an input value and choose **OK**.

You can use this method to supply input values for each parameter. The values are saved with the report description. If you do not supply values for all parameters, you are prompted to enter values for any remaining parameters at runtime.