

## Instructions for installing / configuring URSA 3.01.0043

### Installation

Uninstall the previous URSA version using the installer for that version.

Note: The changes made to 3.01.0041 (and the installer) have been removed in version 3.01.0042.

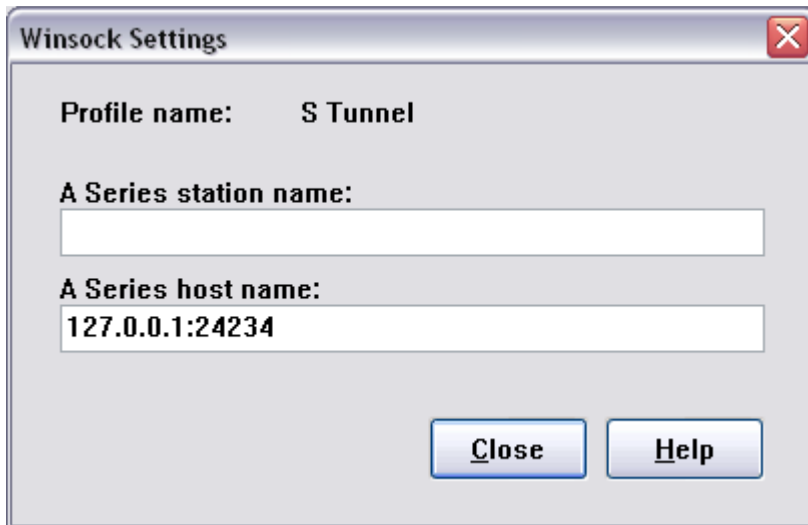
Install URSA 3.01.0043 using the latest installer.

### Configuration

URSA Winsock connection profiles now support the ability to specify the port number to use to connect.

You will need to create different Winsock connection profiles, if for example, you use a production machine and a development machine.

When creating a Winsock connection profile, click on the “configure” button and you will see the Winsock Settings dialog:



Use the loop back address 127.0.0.1 as the IP address for each profile. To specify the S-Tunnel port number, add a colon and then the port number to use.

Note: DO NOT PUT ANY SPACES between the IP address, the colon and the port number.

Save each connection profile and test them to see if they connect.