

July 2005

**To: URSA users**

**From: Decision Support Inc.**

**RE: URSA Version 3.01.0020**

This document accompanies materials related to URSA Version 3.01.0020. This version contains the features described below. We recommend that you use this latest version of URSA in conjunction with one of the new versions of the Micro Filter (either the Micro Filter for TCP/IP Version 4.10.0001 or the Micro Filter for Windows Version 3.30.0002). We also recommend using Host Version 60.300 or later.

### **Support for missing values expanded**

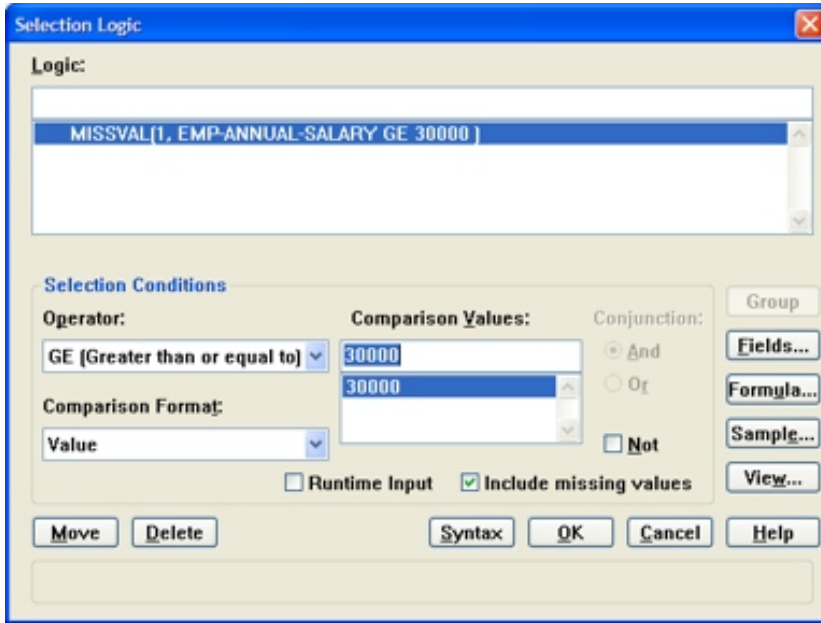
When generating a report that contains selection logic, you may occasionally receive an end-of-report message that shows the number of records included or excluded due to errors. This message means that one of the fields contained in the selection expression contains bad or missing data.

A new check box option labeled **Include missing values** in the **Selection Logic** dialog box allows you to include these records in your report. You will no longer receive the message about the number of records excluded due to "where" errors at the end of your report, as you see in the following example:

END OF REPORT:

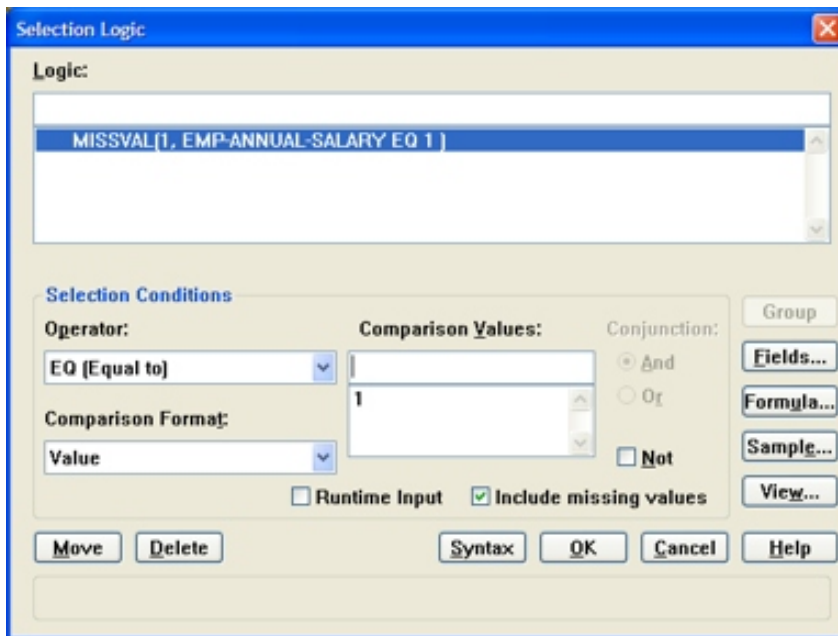
FILE	RECORDS READ
-----	
1	343 (22 EXCLUDED ON 'WHERE' ERRORS)
PROCESSED	318

When you set this new option, URSA uses the MISSVAL function and it substitutes a value of 1 for records in which the field contains bad or missing data:



This expression evaluates to a true condition. Therefore, the bad or missing records are selected in addition to the records that contain data that meets your selection condition.

To select *only* records in which the field contains bad or missing data, check the **Include missing values** option and then enter 1 as a comparison value:



A value of 1 is substituted for records in which the field contains bad or missing data. The report will include *only* records in which salary is missing.

*Note: Further documentation is contained in a new section titled "Handling missing data" in chapter 8 of the URSA User's Guide.*

## **Full report profile option applies to URSA reports now**

When you create a user profile in EZINSTALL or URSA *infoSuite* Manager, one of the options you can specify is whether the user can generate full reports. This option now applies to URSA as well as EZSPEC. If you turn off the ability to generate full reports in a user profile, the user cannot generate full reports in URSA. The **Full Report** command and **Run** toolbar button are grayed out.